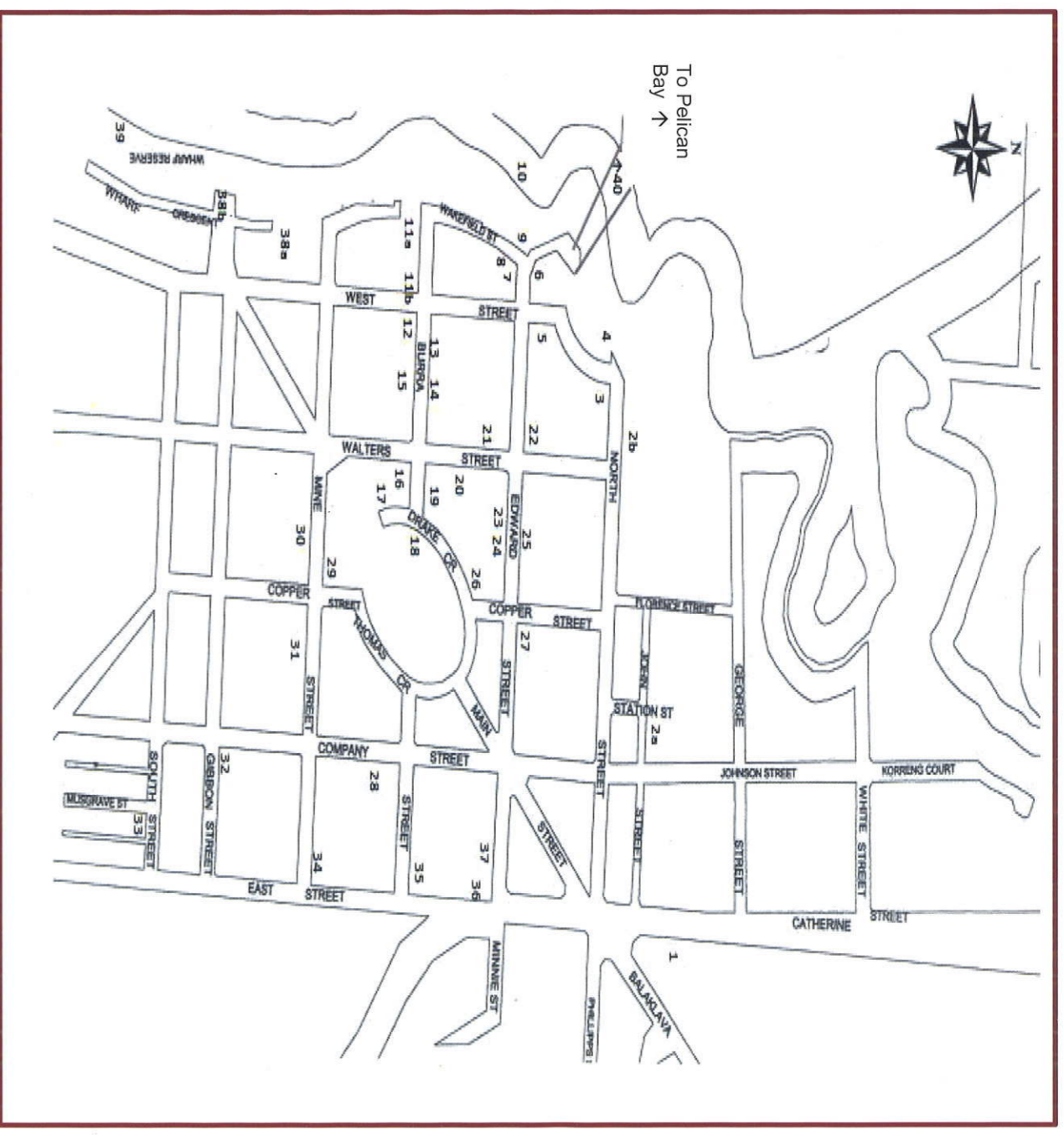
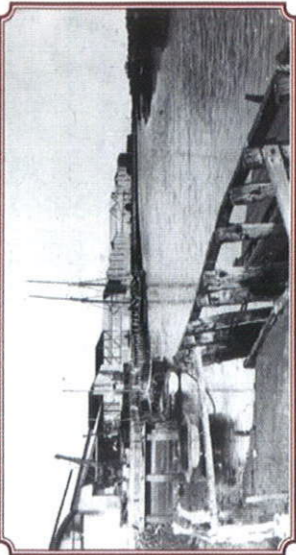
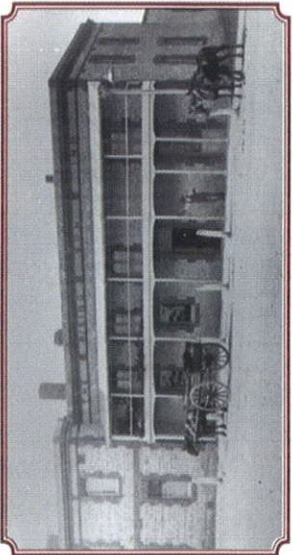


## Town Map of Port Wakefield



### Port Wakefield Community Management Committee 2017

Some of the buildings referred to are privately owned. Please respect owner's privacy. The area covered by this walk is flat for easy walking, wheelchair access or vehicular. Walking time approx. one hour.



**WELCOME TO OUR TOWN**  
Gateway to the Yorke Peninsula  
and the Mid and Upper North.

**HISTORICAL WALK**  
Port Wakefield is named after Edward Gibbon Wakefield who devised the system of colonisation used in the early settlement of South Australia. Originally known as Port Henry it was used as a port for copper ore from Burra Burra. The town of Wakefield was established next to the port in 1850 and Port Henry subsequently adopted the name Port Wakefield.

## PORT WAKEFIELD

## PORT WAKEFIELD BUSINESS DIRECTORY



### PORT WAKEFIELD MOTORS

#### RECOVERY & TYRE SERVICE

##### CENTRE

All Mechanical Repairs/Service,  
Tyre Service, Towing,  
24/7 Recovery & Road Service,  
Beach Rescue  
*Pensioner Card Welcome*  
Call Ralph Todino  
**Ph: 8867 1311 or 0418 800 952**  
Highway One, Port Wakefield



### South of the Earth

#### CAFÉ

##### Opening Times

Thurs & Fri 9am – 3pm  
Sat & Sun 9am – 4pm

##### Gallery open

Sat – Sun 10am – 3pm

#### Organic Coffee Fresh Food

##### Friendly Service

12 Burra Street Port Wakefield  
(Follow the signs in town centre)  
Phone Caterina: **0407 398 018**  
Email:  
saltothearthcate@hotmail.com.au



### Port Wakefield Caravan Park

Managers : Rob & Jen

welcome you.

24 Powered sites (8 River frontage),

4 Unpowered tent sites,

9 Cabins.

Tidal Swimming Area,

Fishing, Walking, Playground.

Phone : **08 88671151**

Email :

[info@portwakefieldcaravanpark.com.au](mailto:info@portwakefieldcaravanpark.com.au)



Located on Highway 1 next to the Shell service station. We are open 7 days a week and offer a large selection of pies, pasties, cakes and pastries baked fresh daily. We also offer top quality coffee and fresh made rolls and sandwiches. Come in and try our award winning product for yourself.

**Mon - Friday 7am - 5pm**  
**Saturday 8am - 3pm**  
**Sunday 8am - 4pm**



### Matthew's Fish

For all your fish supplies:

Caught locally;

King George Whiting,

Silver Whiting,

Garfish etc.

Also Smoky Bay Oysters,  
Prawns.

Meal packs available

(08) 8867 1183

5 South Street Port Wakefield



### Port Wakefield Hotel

Family Friendly Hotel

Family Owned & Operated

\*Pokies \*TAB \*Keno

\*8 Ball \*Darts

\*Old Fashioned Pub Grub

Dining room open:

Lunch 12-1.30pm

Dinner 6 – 8.30pm

**WE CATER FOR FUNCTIONS**

**Ph. 88671583**



## RISING SUN HOTEL PORT WAKEFIELD

Meals 7 Days

ATM

Beer Garden & Outdoor Playground  
Daily Specials & Pensioner Deals

Pokies - Gamble Responsible

Friendly Service

30 Edward Street

Ph: 8867 1023

## Port Wakefield Motel and HOLIDAY HOMES

- ✓ Spacious Motel Rooms
- ✓ 2 & 3 Bedroom Modern Homes
- ✓ All Serviced Daily
- ✓ Nice Heating and Cooling
- ✓ Affordable Prices
- ✓ Friendly Service

Phone / Fax: (08) 8867 1271

[www.pwmotel.com.au](http://www.pwmotel.com.au)