



Port Wakefield Community Newsletter

Wednesday 26 November 2014 Issue 23
Circulation 370

This is a Publication of the
Port Wakefield Community Newsletter Inc.
Email: p.w.news@hotmail.com



COMMUNITY CALENDAR

Mon

CFS Training & Siren Testing 8.30pm
Little Athletics 5pm-6pm

Tues

Men's Shed 9am-4pm
Community Computing 10am-3pm
SA Ambulance Training 7.30pm-9.30pm
CFS Cadet 5pm-7pm
Library 10am-3pm

Wed

Community Bus Service
(pension Week) 9.30am
Chooks & Chcks 10am
UC Op-Shop 10am-2pm
Library (when printing newsletter) 9am-10.30am

Thur

Karate Class 6.30pm-8pm

Fri

Playgroup (at kindy) fortnightly 9.30am-11am
Bingo (pension week) 7.30PM

Sat

UC Op-Shop 9.30am-11am
Clementina Corner 1pm-5pm

Sun

Catholic Liturgy 1st, 3rd & 5th weeks 9am
Mass 2nd week 10.30am
Mass 4th week 9am
UC Praise and Worship 10.30am
Clementina Corner 1pm-5pm
Library 12pm-1.30pm

Painting Pots by Port Wakefield Primary School



The whole school recently spent several days at the swimming hole painting the pots on the foreshore and two of the table tops. This was made possible through Wakefield Regional Council approaching the school and providing us with some money to employ local artist and relieving teacher Mandy Chapman to help the children put their winning designs on the pots. We also had Lynda Painter from Wakefield Regional Council help us. Continue on page 2.....

The Thought for Today

Recipe for avoiding gossip – If someone doesn't have to know – don't tell them.

Please Note:

Next Issue: Wednesday 10 December 2014

News Items to be submitted by email or to the Newsletter box in the Post Office by: 3.30pm
Friday 5th December 2014

Sports Results to be emailed or delivered to Post Office by 9am Tuesday 9th December 2014
Info Phone: 88671328 or 0409 286 177



Painting Pots cont....

The finished pots are very colourful and are a credit to the teamwork displayed by all our students. We thank the Council for giving us the opportunity to work out in our community.

Hummocks Watchman Eagles Footy Club & Hummocks Netball Club



Pre Christmas drinks & nibbles

7pm Saturday 6th December
Eagles Sports & Community Centre Port
Wakefield

*All players, supporters & new members
Welcome!!*

CHRISTMAS SHOPPING - SALISBURY and MUNNO PARA

Monday 15th of December

Departing from front of Pat Madigan's home at 8.30am and returning about 3.30pm.

Home pickup can be arranged.

Contact Helen Gunter on 0407671141 or 88671141 to book your seat.

****Please note that the new Community bus has only 10- 12 seats, so get in quickly.****



Christmas riddles...

- Q. What kind of bird can write?
- Q. What do you get if you cross Santa with a detective ?
- Q. What did Adam say on the day before Christmas?
- Q. Why does Santa Claus like to work in the garden?
- Q. What happened when the snowwoman got angry at the snowman?
- Q. What do snowmen wear on their heads?
- Q. How do sheep say Merry Christmas in Mexico?
- Q. What is a snowman's favorite lunch?

Answer on crossword page.

Official Opening of Port Wakefield Courthouse Museum, February 1994



A section of the crowd at the official opening of the historic Courthouse Museum by Her Excellency Dame Roma Mitchell, February 1994



Dame Roma Mitchell cutting the ribbon to officially open the historic Port Wakefield Courthouse, Police Station and cells February 1994

DATES TO NOTE

LAST NEWSLETTER 2014

Wednesday 10 December 2014

FIRST NEWSLETTER 2015

Wednesday 21 January 2015

COMMUNITY LIBRARY &

COMMUNITY COMPUTING

CHRISTMAS HOLIDAY TIMES

Tues	16 December	10am – 11am
Wed	17 December	CLOSED
Sun	21 December	CLOSED
Tues	23 December	CLOSED
Wed	24 December	CLOSED
Sun	4 Jan`	CLOSED
Tues	6 Jan	10am – 11am
Wed	7 Jan	CLOSED
Sun	11 Jan	12 noon – 1.30pm
Tues	13 Jan	Computing 10 – 12 noon
Wed	14 Jan	CLOSED
Sun	18 Jan	12noon – 1.30pm
Tues	20 Jan	Computing 10am – 3pm



Saturday, 21 February 2015 4pm - 9pm Avon District Hall – AVON

FREE Giant Indoor Games & Fun Activities for young adults and children(must be accompanied by an adult)

At discounted costs Outdoor Laser Skirmish

By Locked & Loaded Laser Games 5pm to 8pm \$6 per 10 min game, \$15 unlimited game play pp.

*Enclosed shoes a must - Aged 8 years and over. Bookings now available. Christmas vouchers for Laser Skirmish available as stocking fillers. Contact 88671127 to arrange. This is a drug, alcohol ,smoke, free event sponsored by **Wakefield Regional Council**.

Birds of the Port Wakefield Area

from a book of the same name by Paul Taylor and Wikipedia



Welcome Swallow *Hirundo neoxena*

Common in all habitats. Swallows take advantage of buildings and houses for building their mud nests. In some of these situations they are not so welcome.

White-Backed Swallow *Cheramoeca leucosternus*



Occurs in small numbers and most likely to be seen in pairs near sandy rises where they dig a tunnel to nest. Wild Dog Hill, a few kilometres north of Port Wakefield is a favoured breeding site.

Barn Swallow *Hirundo rustica*

Rare. A recently discovered visitor to Australia, mainly in the north.



The Barn Swallow is similar to a Welcome Swallow but has a black chest band.

Cleaning...

Use inside of a banana peel to **polish your shoes**.

Smelly sneakers? Sprinkle baking soda inside and leave overnight.

Photographs can be cleaned by rubbing gently with cotton wool dipped in methylated spirits,

2014 Annual Clare Christmas Arts & Crafts Fair

Clare Town Hall
Including Barbara Long Room
& Ennis Park
Main North Rd Clare
(right in the middle of town)

**Sun 7th December
9am - 3pm**

Come along and do some Christmas Shopping
Get that individual gift
Or just spoil yourself
Huge variety of quality stalls and craft people
From all over the State
bringing you the best of their craft and produce
HOPE TO SEE YOU THERE

General enquires – Di 88458069
Suzanne 88422202
Sylvia 88422044
Email: Denise at denross@dodo.net.au
Di airlie@bigpond.com

Clare Craft Fair

Lions Traditional Christmas Puddings & Cakes now available at the Port Wakefield Post Office

\$16 1.5kg cake
\$12 1.kg cake
\$12 Pudding



PORT WAKEFIELD CHRISTMAS RUN

from 11am
Sunday 14th December 2014



Indian Orphanage



For some time now we have been following the progress of a small orphanage in India in their attempt to build a school for the children. We have sent letters to the children and hope to become pen pals with them. We have seen photos of them doing lessons on the floor where they also eat. The SRC has donated \$250 to the school so that they can purchase pens, pencils and paper. Kristal and Daniel presented this money to Brian and Judy Underwood who will visit the orphanage very soon. We look forward to seeing the photos to see the progre of the building work on the school.

Port Clinton Community & Sports Club Inc.

12 Yararoo Drive, Port Clinton SA 5570
Ph: 88377103

Monday – Lunches – 4 choices \$7.00

Wednesday - 4:00 PM til Close – Porterhouse

Steak or Fish night \$10.00

Thursday - 4:00 PM til Close – Schnitzel or Fish
night \$9.00

Friday - 4:00 PM til Close –A la carte menu,
dine in or take away meals, happy
hour, Members' draw

Saturday - 4:00 PM til Close – A la carte menu,
dine in or take away meals

Sunday - 11:00 AM til Close – Cheap 'Pot
Luck' lunches

First Sunday of the month BBQ and salad
(no pot luck lunches these days)

Bookings available for Functions

Memberships available \$30.00 per year

RISEING SUN HOTEL

SOCIAL CLUB



XMAS SHOW

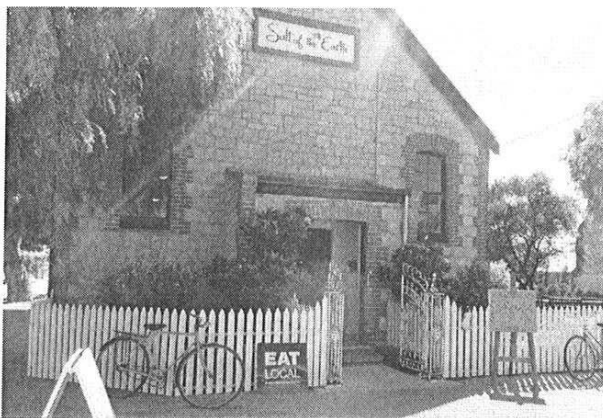
14TH December 2014

**1pm in the beer garden
after the Christmas run**



**Fun – food
drinks - raffles**

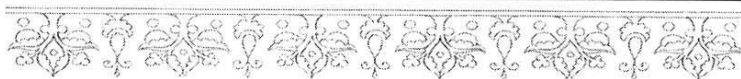
**Father Christmas for the
vide**



Come visit us on Facebook
www.facebook.com/saltoftheearthcafe

Salt of the Earth

Café and Gallery
 12 Burra Street, Port Wakefield
 Contact Caterina: 0407 398 018
saltoftheearth@hotmail.com.au



'A VISION AND A DREAM'

A Viennese Ballroom

An Exhibition of Figurines by Jill Cooter, Porcelain Artist



At Salt of the Earth Gallery

Open Saturday & Sunday
 10:00 am - 3:00 pm for the public or
 any day for a group booking by prior arrangement.

Luxury Coach group travel is available from
 Kanga Coachlines (Ph: 08 8262 5111)

12 Burra Street, Port Wakefield, South Australia

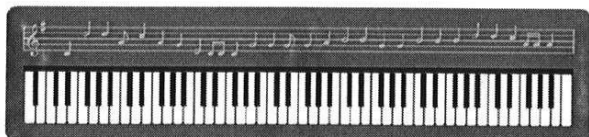
Salt of the Earth

Mobile: Caterina: 0407 398 018
 Facebook: www.facebook.com/saltoftheearthcafe
 Email: saltoftheearthcafe@hotmail.com.au



Performing in Café Michele Thredgold

Saturday
 29th November 2014



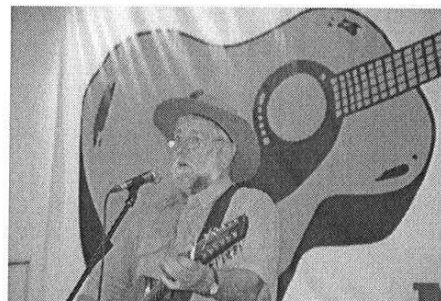
JEFF COOK SHOW

Salt Of The Earth Café

Port Wakefield

Legendary Entertainer and Poet

From Yorke Peninsula



Mondays, Tuesdays or Wednesdays
 (when Salt of the Earth is not open to the public)

Enjoy lunch and a show
*Good old fashioned
 entertainment!*

Cost \$35.00 per person

Contact: Caterina on 0407 398 018 or

E-mail: saltoftheearth@hotmail.com.au

Group bookings: Contact Toni at Eureka Tours on
 08 82624001 or e-mail eurekatours@esc.net.au

Minimum of 25 people

Joel Wilson

PLUMBING & GAS

0458 103 833

- Blocked Drains & Repairs
- Effluent/Sewer Connections
- Rainwater Tank Installations/ Water Filtration Systems
- Solar Hot Water Installations
- Hot Water Service Installation & Repairs
- Gas Fitting- New Installations, Repairs & Servicing
- Backflow Installation & Testing
- General Plumbing & Maintenance
- Backhoe/ Front End Loader Hire
- Plumbing Parts & Supplies

For all your Plumbing Maintenance

Available All Hours

Providing an Owner Operated,
Quality Service

BASED IN PORT WAKEFIELD

Birthdays

Nov	27	Brian Milton
	30	Tom Robertson
Dec	5	Sarah Rapko
	6	Kaleb Walding-Wilson
	7	William Robertson
	9	Megan Payne



Winner Lucky Number Draw Port Wakefield Newsletter E. Henrys – No47

Thank You

On the behalf of Port Wakefield CFS members would like to thank everyone for their kind donations given for the family of Andrew Harrison it was greatly appreciated.

Community Bus

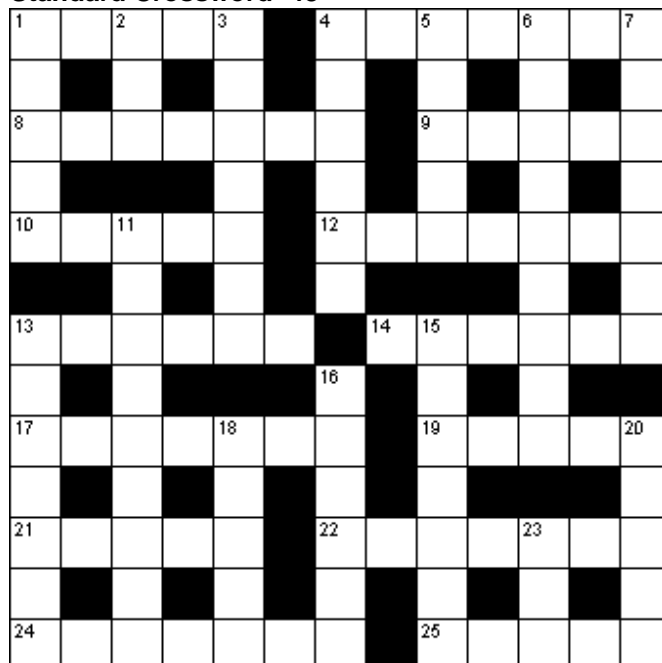
Dates for Community Bus to Balaklava
Wednesday 3rd December 2014
Info **Phone Helen 88671141**
or Terry 88671073



A	T	T	I	C		C	O	N	T	A	C	T
T		R		A		L				D		A
T	R	O	U	B	L	E			A	N	V	I
E		L		A		V		P		A		E
M	O	L	A	R		E	X	T	E	N	D	S
P				E		R				C		
T	R	E	A	T	Y		S	C	H	E	M	E
		P				S		H				T
L	E	I	S	U	R	E		A	M	B	L	E
U		C		S		C		O		E		R
C	R	U	D	E		O	C	T	A	G	O	N
I		R				N		I		I		A
D	R	E	A	M	E	D		C	A	N	A	L

Solution - 47

Standard Crossword- 48



Across

- Prank (5)
- Small community (7)
- Everlasting (7)
- Accolade (5)
- Wear away (5)
- Voter (7)
- Alter or regulate (6)
- Refuge (6)
- Repossess (7)
- Travel lodge (5)
- Mound of stones used as a marker (5)
- Sincere (7)
- Latticework (7)
- Herd or flock of animals (5)

Down

- Subject (5)
- Frozen water (3)
- Dog houses (7)
- Smooth fabric (6)
- Letting contract (5)
- Flat (9)
- Senior (7)
- Target (9)
- Fruit (7)
- Stuck (7)
- Hot fragments from a fire (6)
- Declare invalid (5)
- Supple (5)
- Self (3)

Christmas riddle answers...

- A. A pen-guin
- A. Santa Clues!
- A. It's Christmas, Eve.
- A. Because he likes to hoe, hoe, hoe!
- A. She gave him the cold shoulder.
- A. Ice caps.
- A. Fleece Navidad!
- A. An Iceberger!

Submit your advertisement:

Place your advertisement together with your payment and name and contact number in an envelope and lodge it in the Newsletter box in the Post Office.

or

Email to p.w.news@hotmail.com

And Electronic Transfer to;

BSB: 065 503 A/c: 10017226

Port Wakefield Community Newsletter Inc.

or

- Post with payment to:
Treasurer,
2 Phillips St
Port Wakefield 5550

ADVERTISEMENT PRICES

Closing time Friday 3.30pm.

FULL PAGE \$20.00

½ PAGE \$12.50

¼ PAGE \$ 7.50

2 or 3 lines Free for trial period

Business Services Directory \$120/year

Cost for typist to compose your advertisement \$5

A man received the following text from his neighbour:

I am so sorry Bob. I've been riddled with guilt and I have to confess. I have been helping myself to your wife, day and night whenever you're not around. In fact, more than you. I do not get it at home, but that's no excuse. I can no longer live with the guilt and I hope you will accept my sincerest apology with my promise that it won't, ever happen again. The man, anguished and betrayed, went into his bedroom, grabbed his gun, and without a word, shot his wife and killed her. A few moments later, a second text came in:

Bloody autospell! I meant "wifi, not "wife"

Steven Griffiths MP JP Member for Goyder

51 Robert Street
Maitland SA 5573
Ph: (08) 8832 2455
Fax: (08) 8832 2699
Email: goyder@parliament.sa.gov.au
Web: www.stevengriffiths.net



*Please contact my office with any enquiries
relating to State Government issues.*

BINGO

Wakey bingo will be held on Friday 5th Dec. 2014 Why not comes along for a fun night and you might even win a game or 2. Bingo will be on every 2nd Friday at 7.30pm (pension week!). Why not give it a go if you have never played bingo it is **FUN!!** Every Saturday is bingo at Port Clinton at 2pm. Fun, fun even have a laugh or 2. For more information you can phone **Nancy** On **88671255**. Thank you

AUSSIE ELECTRICAL

*Supplying all
your electrical needs:*

- New Houses
- Additions
- Renovations
- Rewires
- Sheds
- Verandas
- Meter box upgrades
- Safety switches etc
- Ceiling fans
- Power points etc



RELIABLE
ph. 0411440144

Lic. PGE147387

KH Kitchens & Custom Built vanities, laundries & wardrobes

**Servicing the Northern
Suburbs and Country Areas of
SA**

**All our kitchens are made to
suit your space and designs.
We manufacture any design to
suit your individual needs
whilst keeping it both
practical and affordable.**

khkitchenscustombuilt@gmail.com
0448 654 186
www.kh-kitchens-custom-built.com.au

Port Wakefield *Motel* and HOLIDAY HOMES

- Spacious motel rooms
- 2 & 3 bedroom modern homes available
- All serviced daily
- Nice heating and cooling

Peter & Luxmme Underwood
 (08) 8867 1271
 www.pwmotel.com.au



Balaklava
Thrifty-Link Hardware
Solver paints and hardware
19 Edith Terrace
Ph 8862 1063



Excavator &
Mini
Skidsteer

Kanga
Loader

**For all your:
post hole boring
Trenching, Septics,
Footings Levelling & more!**

**Balaklava Stitch Joint
2-6 Howe Street
Phone: 8862 1074**

**We cover the Country
Carpet, vinyl, blinds & awnings
Selection of woven rugs
Free measure & quote**

**Everyone who purchases property
should have a Will**

Buying property is a big decision and so is deciding how it is to be distributed at the time of your death.

We have more than 35 years' experience assisting clients to ensure that their affairs are in order.

Give us a call to discuss preparing a new or updating an existing Will.



GERMEIN REED
Lawyers & Conveyancers
2a Forster Street, Kadina
8821 1700
grmlawyers.com.au

**Port Wakefield
Newsagency & General
Store**



Newspapers
Magazines
Lottery
Grocery Lines
Fruit &
Vegetables

Gifts Pies Pasties Hardware

Bank SA Agency
Phone / Fax 88671080
2 Catherine St, Port Wakefield

Need a Hairstyle or colour?

Port Wakefield Hair

Lisa: 0429939301

- **Restyles**
 - **Trims**
 - **Colours**
 - **perms**
 - **foils & ombre**
 - **Colour corrections**
 - **men's, ladies & children**
 - **Wella professional stockist**
 - **entire Wella prof retail range avail and more**
- abn. 80368056748



**PORT WAKEFIELD
HOTEL**



- * Meals from \$10 Every day
- * **Happy hour 5.30-6.30p.m.**
- * **Soup, salad bar & hot veg. bar included with dinner.**
- * **Take away meals & alcohol**

Dining room open:

Lunch 12 – 1.30pm

Dinner 6 – 8.30pm

WE CATER FOR FUNCTIONS

TAB, SKY & KENO

Ph. 8867 1583

Balaklava Electronics

- Appliance Repairs
- Fix your Stove, Washing Machine or Fridge
- Air-Conditioning Installation
- Television repairs
- Antenna:
- Installs and Upgrades
- Install Power-Points, Smoke Alarms and Electrical Safety Switches



28 George ST Balaklava
Phone: 88622211

balaklava@leadingappliances.com.au



Monday 9:30am – 1:00pm
Pharmacist Present 9:30am-1pm

Tuesday 9:30am – 4:30pm
Pharmacist Present 10:00 - 4:30pm

Wednesday 9:30 – 1:00pm
Pharmacist Present 9:30 – 1:00pm

Thursday Closed

Friday 9:30am – 4:30pm
Pharmacist Present 9:30 - 4:30pm

22A Burra St.

Port Wakefield

Phone/fax 88671566

Proprietor – Anne Rosser

WH TREVERTON

PAINTER

WAYNE

0417 889 753

15 Railway Tce
Balaklava SA 5461
Home phone: 8862 1509



BLD Lic: 219551

Kipling's Bakery

Open 7 days a week

Mon – Fri 7am – 5pm
Saturday 8am – 3pm
Sundays 8am – 4pm

Come and enjoy our top quality coffee and award winning product, baked fresh on premises every day, guaranteed!



John & Lee-Anne Guerin
Mechanical Repairs

Port Wakefield. SA 5550

MOBILE: 0457 445 949

RAA Contractor

24 HR Towing