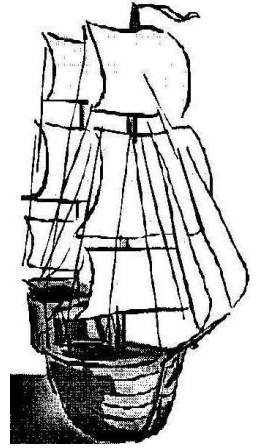


Port Wakefield Community Newsletter

Wednesday November 18th, 2020
Circulation 450

This is a Publication of the
Port Wakefield Community Newsletter Inc.
Email: p.w.news@hotmail.com
Published fortnightly




COMMUNITY CALENDAR

Mon	CFS Training	6.00pm - 8.30pm
Tues	CFS Cadets	5pm
	Men's Shed	9am-4pm
	Dr Nyoni	10.15am-1pm
	SA Ambulance Training	7.30pm-9.30pm
	Library	10am-1pm
Wed	Community Bus (pension week)	9.30am
	Library (when printing newsletter)	9am-10.30am
Thur	Cards & Games (in recess)	11am – 2pm
	Transfer Station Open	10am-11am
Sat	UC Op-Shop	9.30-11.30am
	Transfer Station Open	10am-2pm
Sun	Library	12pm-1.30pm
	Courthouse Museum	2pm-4pm
	(1 st Sun each mth)	9am-10am
	Transfer Station Open	
Catholic	Mass	9am
Uniting Church (UC)	Service	10.30am


Thought for the day

It's okay to look at the past and the future. Just don't stare.
-Lisa Lieberman-Wang





LET'S NOT UNDO ALL THE GOOD.

To continue playing your part in helping stop the spread of coronavirus, keep practising good hygiene and stay 1.5 metres apart whenever and wherever you can.



Download the **COVIDSafe** app today.

For more information
StopTheSpread.sa.gov.au

  Government of South Australia
SA Health

The final newsletter of 2020 is out on December 2nd. If you have any news items for summer, please email p.w.news@hotmail.com by November 27th.

--Please Note:--

Next Issue: Wednesday December 2nd 2020
News Items to be submitted by email or to the Newsletter box in the Post Office by:
3.30pm Friday November 27th 2020

Sports Results to be emailed by 9am **Tuesday December 1st 2020**
Info Phone: 0438 860 285

Pt Wakefield Community Management Committee

Hello newsletter readers,

Well what a year 2020 has been so far with so much uncertainty and restrictions and businesses forced to close or change their method of operation. We congratulate all for their efforts in doing the right thing to lower the risk of transmission of COVID. The restrictions have greatly affected the opening and operation of our community managed council owned buildings.

There is light shining as we head into Christmas, with restrictions easing and work being conducted by the Men's Shed and Courthouse Museum to be COVID compliant and re-opening their doors. The last building to "re-open" will be the Clementina Craft Cottage, the previous caretakers and operators are unable to continue in its operation. The good news is that there are a couple of willing locals who will assist in the hand over from the previous sub-committee. Current Clementina committee members who are reading this, please don't be alarmed, as the previous sub-committee will be in touch to discuss options as the handover will be conducted in January 2021. The intention is to carry on the handmade craft theme with some additional services for visitors to the area. If you're interested in either placing crafty handmade items within or assisting in the opening of the cottage please contact the CMC via email (portwakefieldcmc@hotmail.com) or PO Box 573 Pt Wakefield 5550 and we will be in touch.

There will also be a working bee on Saturday the 21st of November to install new seating in the swimming pool area, putting Christmas bows up down Edward Street and some landscape works to the front of the Courthouse Museum. If you can spare a couple of hours that day to help out with these projects to make our town really shine, it would be greatly appreciated.

The CMC will again be seeking nominations for Citizen and Young Citizen of the year to be awarded on Australia Day 2021, nomination forms and criteria will be in the next newsletter and at Post Office shortly. The CMC are seeking any community not-for-profit club or community who would be interested in running the breakfast and ceremony on Australia Day. Please contact the CMC via email (portwakefieldcmc@hotmail.com), or PO Box 573 Pt Wakefield 5550.

Looking forward to the town's recovery after such an ordinary year.

Brett Dodd
Chairman

Birthday Wishes

Beth

Over the years we have shared many a coffee, laughed a lot and talked a lot. A few tears along the way. So, dear friend, I thought I'd take this opportunity to wish you a VERY HAPPY BIRTHDAY and much enjoyment on your Special Day.
Regards, Marg.



PORT CLINTON BINGO IS BACK!!!

**Every Saturday afternoon at
Port Clinton Community Hall
Cumberland Road
Eyes down at 1:30pm**



Did you know?

The first Australian sports team to tour overseas was an all-Indigenous cricket team who toured England in 1868. They played 47 matches over six months for 14 wins, 14 losses and 19 draws.

Port Wakefield Kindergarten

Thomas Crescent,
Port Wakefield SA 5550
Ph: 8867 1187

Playgroup 2020!

For all children aged 0-5 years

Playgroup

Monday 10:00am – 11:30am

(during term time)

at Port Wakefield Kindergarten

Please come and join us and bring a piece of fruit to share.

In the Garden 8

So many wonderful choices we have for our gardens these days.... Flowers have been grown in between the veggies as in companion planting.... Roses or Berries were grown and used as hedges. They formed wind breaks and most animals didn't eat them or push through Compost bins weren't invented but what didn't go to the chooks down the back was placed into furrows in the garden, covered with soil and left. This encouraged worms to multiply and kept the soil viable.... Simple and effective.

How often do we admire a front or veggie garden?... We wonder too how they did it, and after reading many books they all say planning is the key.... So there we are.... Planning The idea was we worked out the amount of vegetables the family required for a season...The produce which is left over can be stored and preserved for use later

Cheers,
Wendy Garvie



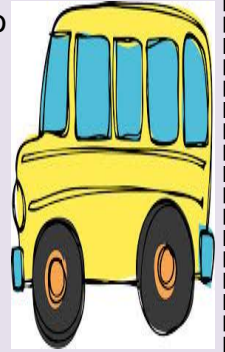
Community Bus

Dates for Community Bus to

Balaklava: **CANCELLED**
November 25th

December 9th

Phone Helen 0407 671 141
or Terry 88671 073



Community Bus

PORT WAKEFIELD to SALISBURY and MUNNO PARA

Our next trip is on **December 7th**

Please book your seat with
Helen 0407 671141
or Terry 0428 867107

We begin pick up at 8.30am
We are usually home
by 3.30pm



"The Magic of Christmas Trees" Festival

1 December to 19 December 2020

For Public on Tuesday, Saturdays and
Sundays

Between 11am to 3pm

Times can be negotiated for Groups

Avon District Hall

1883 Avon Rd Avon SA 5501

Entry- \$3.00 pp

Family 2x2 \$10

Includes Elves Treasure Hunt for Kids



Great event for Children and Adults
(All children must be accompanied by an
adult.)

Current Covid Rules at the time will apply
Refreshments for Sale
Info PH 88671127



hAMCo
SERVICES

HOME AND GARDEN MAINTENANCE

*****NEW PHONE NUMBER*****

0459 363 186

GARDEN & OUTDOOR SERVICES

- *Lawns & Edges
- *Weeding & Pruning
- *Rubbish Removal
- *Window Cleaning
- *Solar Panel Cleaning
- *Gutter Cleaning

MAINTENANCE SERVICES

- *Flyscren Replacement
- *Tap Washers Replaced
- *Door & Window Locks
- *Fence & Gate Repair
- *On-site Welding
- *Plus so much more

FREE QUOTES

7 DAYS

PENSIONER RATES APPLY

FAST, FRIENDLY, RELIABLE, LOCAL SERVICE



© Brian Crane.

Did you know we have;

CCTV Drain Camera & Locator

Hydrojet Drain Cleaner

Located at: 6 Phillips Street, Port Wakefield

JOEL WILSON
PLUMBING & GAS
0458 103 833

EFTPOS available

Your Local Plumber, Providing Quality Service



FOR SALE

Exercise Bike (old model) working order \$10

Punching Bag on Stand \$10

'Mean Machine' suitable for smaller child \$10

Or all three for \$25.
Phone: 0409 286 177

Quiz questions

- 1- What was the name of the overweight man in the 1970s Life Be In It ads?
- 2- What is the national flower of Japan?
- 3- What is the alternative name for German Shepherds that was introduced during World War One?
- 4- What is a gymnophobe afraid of?
- 5- Which three countries in the United Nations start with the letter J?

Great Moments in Australian History

If you've never heard of Lola Montez, imagine a 19th-century version of Madonna with anger management issues and you've got the idea. An Irishwoman who reinvented herself as a Spanish dancer, Montez was famous worldwide for her salacious dancing, her romance with the King of Bavaria, and for putting up with absolutely no nonsense from men.

In 1855, Montez toured gold rush Victoria. Her act was so popular with lonely prospectors that they showered the stage with gold nuggets, but the upright citizens of the colony were less impressed. One of her harshest critics was Ballarat Times editor Henry Seekamp, who published a letter that said she was immoral and had "the form of a woman combined with characteristics of a man."

He soon wished he hadn't. After reading the unkind review, Montez stormed into the pub where Seekamp was enjoying a drink and began belting the everloving crap out of him with a horsewhip. Naturally, Seekamp fought back with a whip of his own. An all-out brawl between journalist and showgirl kicked off before an audience of startled drunks.

The winner? By popular decision, Ms Montez. According to the Age, the crowd finally threw Seekamp out on the street and pelted him with fruit, while Montez "shook her whip at him in defiance and contempt." The "War of the Whip" made news around the world.

(Source: The Age, the Daily Telegraph)



(State Library of Victoria)



Rising Sun Social Club

CHRISTMAS SHOW

Sunday December 6th 1pm - 4pm

Includes lunch, dessert & drinks (beer, wine & softdrink only) + Live Music

RSVP - Friday 24th November



MEMBERS - \$30.00ea

KIDS under 14 - \$5.00ea (14+ \$10.00ea)

NON-MEMBERS - \$50.00ea



Birthdays

November

Birthstone- Topaz meaning Fidelity

Flower- Chrysanthemum

Nov 20- David Robertson
Sheila Daniel

Nov 22- Beth Tugwell

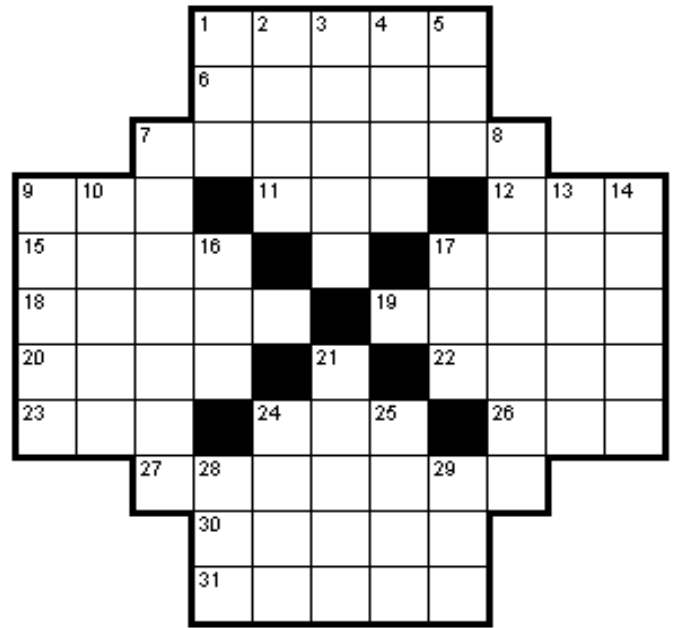
Nov 26- Melanie Yeates
Robert Chadbourne
Sarah Freund

Nov 27- Brian Milton

Nov 30- Tom Robertson



X-Words 12



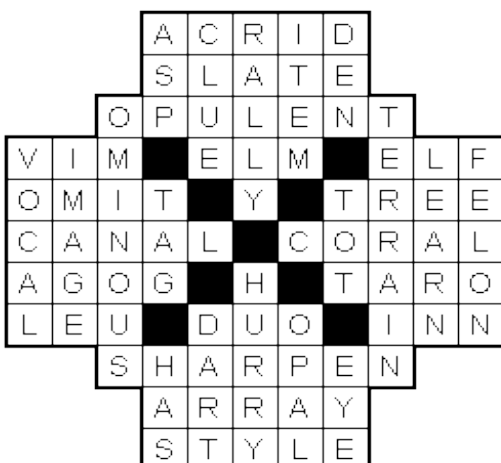
Across

1. Velocity (5)
6. Animated (5)
7. Scholar (7)
9. Playing card (3)
11. Males (3)
12. Steal (3)
15. Challenge (4)
17. Finishing line (4)
18. Tool (5)
19. Beverage made from apple juice (5)
20. Textile machine (4)
22. Remedy (4)
23. Flightless bird (3)
24. Drink in small amounts (3)
26. Feline (3)
27. Replete (7)
30. Fusillade (5)
31. Clean with a bill (5)

Down

1. Was seated (3)
2. Fruit (4)
3. Type of duck (5)
4. Level (4)
5. Lair (3)
7. Of great consequence (7)
8. Malign (7)
9. Muddle (5)
10. Rebound (5)
13. Musical drama (5)
14. Cloth cap (5)
16. Tree (3)
17. Twitch (3)
21. Cunning (5)
24. Celestial body (4)
25. Cover with concrete (4)
28. Small snake (3)
29. Unit of weight (3)

X-Words 11 Solution



Quiz answers

- 1- Norm
- 2- Cherry blossom
- 3- Alsatians
- 4- Nudity
- 5- Jordan, Jamaica, and Japan

Wakefield Plains Medical Clinic

Wish to advise changes to
Consulting session's at

Port Wakefield

DR. NYONI WILL NOT BE

CONSULTING

IN PORT WAKEFIELD

ON

TUESDAY 24th NOVEMBER

Wakefield Plains Medical Clinic

Classified Advertisements

**Did you know?
Our newsletter will print
your classified ad of 2 or 3
lines at no cost to you.
Just email your ad to the
newsletter
(p.w.news@hotmail.com)
or leave a copy in the box
on the counter at the post
office.**

Digital Community Newsletters

Did you know that you can receive
your Community Newsletter by email?
If you wish to do this please contact
Monica: 0438 860 285 to make the
arrangement or
Email: p.w.news@hotmail.com

Port Wakefield Community Newsletter
is also uploaded onto the Port
Wakefield Community Management
Committee website:
portwakefield.sa.au

Submit your advertisement:

Place your advertisement together
with your payment and name and
contact number in an envelope and
lodge it in the Newsletter box in the
Post Office.

or

Email to p.w.news@hotmail.com

And Electronic Transfer to;
BSB: 065 503 A/c: 10017226
Port Wakefield Community
Newsletter Inc.

Or Post with payment to:
Treasurer
10 North St
Port Wakefield 5550

ADVERTISEMENT PRICES

Closing time Friday 3.30pm.

FULL PAGE	\$25.00
½ PAGE	\$12.50
¼ PAGE	\$ 7.50
2 or 3 lines	Free

Business Services Directory

\$150/year

More Info: 0438 860 285

TADS

12 Edith Tce. Balaklava. SA 5461
email: tads@tads.com.au web: www.tads.com.au

EMBROIDERY & SCREENPRINTING SPECIALIST

8862 1793

We also do
**SIGN WRITING
& ENGRAVING**

AUSSIE ELECTRICAL

Supplying all
your electrical needs:

- New Houses
- Additions
- Renovations
- Rewires
- Sheds
- Verandas
- Meter box upgrades
- Safety switches etc
- Ceiling fans
- Power points etc

RELIABLE
ph. 0411440144

Stress Free Property Conveyancing

When buying or selling property –
either by private contract or through an
agent – ensure your peace of mind
and be confident that your contractual
rights are protected.

Call us for an obligation free quote.



GERMEIN REED
Lawyers & Conveyancers
2a Forster Street, Kadina
8821 1700
www.grmlawyers.com.au

KH Kitchens & Custom Built vanities, laundries & wardrobes

**Servicing the Northern Suburbs
and Country Areas of SA**

**All our kitchens are made to
suit your space and designs.
We manufacture any design to
suit your individual needs
whilst keeping it both practical
and affordable.**

khkitchenscustombuilt@gmail.com
0448 654 186
www.facebook.com/kh.kitchens/

Keep the heat out this summer
with our extensive range of
Awnings, Zip Track Blinds and
Block Out Blinds



BALAKLAVA STITCH JOINT

2-6 HOWE STREET, BALAKLAVA
8862 1074

For all your Blinds / Awnings, Flooring
and Furniture needs

FRASER ELLIS MP MEMBER FOR NARUNGA



51 Robert Street Maitland
(08) 8832 2455
narunga@parliament.sa.gov.au

T.A. REDDEN PAINTER

PO Box 20, Balaklava S.A. 5461

*NO JOB TOO BIG OR SMALL
*AVAILABLE ALL AREAS
*QUALITY WORKMANSHIP
*FREE QUOTES
*FULLY INSURED &
LICENCED (BLD. 27142)

Terry:

Ph: 0407 077 992
taredden@internode.on.net

WH TREVERTON

PAINTER

WAYNE
0417 889 753

15 Railway Tce
Balaklava SA 5461
Home phone: 8862 1509



BLD Lic: 219551



Monday 9:30am – 1:00pm
Pharmacist Present 9:30am-1pm

Tuesday 9:30am – 4:30pm
Pharmacist Present 9.30 - 4:30pm

Wednesday 9:30 – 1:00pm
Pharmacist Present 9:30 – 1:00pm
Thursday Closed

Friday 9:30am – 4:30pm
Pharmacist Present 9:30 - 4:30pm

22A Burra St.
Port Wakefield

Phone/fax 88671566
Proprietor – A Rosser & Partners



FOODLAND
BALAKLAVA
13 WALLACE ST
BALAKLAVA SA 5461

PHONE 8862 1571
FAX 8862 2096

Online Shopping:
foodlandbalaklava.com.au

Kipling's Bakery

Open 7 days a week

Mon – Fri 7am – 5pm
Saturday 8am – 3pm
Sundays 8am – 4pm

Come and enjoy our top
quality coffee and award
winning product, baked fresh
on premises every day,
guaranteed!

MID NORTH Pest and Weed Control

ALL PEST PROBLEMS
GENERAL & RURAL WEEDS

- Termites
- Spiders
- Bees, Wasps
- Rats & Mice
- Flies, Fleas
- Millipedes
- Earwigs
- Salvation Jane
- Artichokes
- Calthrop
- Horehound
- Cape Tulip



Call Andrew Boylan 0429 802 912
Office 8842 2001

422 Main North Road, Clare
HEALTH COMM. LIC NO 12



PORT WAKEFIELD MOTORS RECOVERY & TYRE SERVICE CENTRE

All Mechanical Repairs/Service,
Tyre Service, Towing,
24/7 Recovery & Road Service,
Beach Rescue

Pensioner Card Welcome
Call Ralph Todino

Ph: 8867 1311 or 0418 800 952
Highway One, Port Wakefield

www.ptwakefieldmotors.com.au