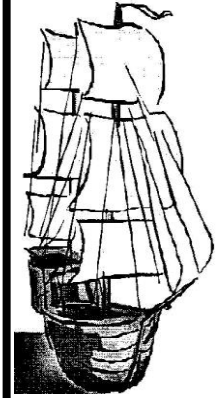




Port Wakefield Community Newsletter

Wednesday November 10th 2021
Circulation 450

This is a Publication of the
Port Wakefield Community Newsletter Inc.
Email: p.w.news@hotmail.com
Published fortnightly



COMMUNITY CALENDAR

Monday

CFS Cadets (fortnightly) 5.00pm - 6.00pm
CFS Training 6.00pm - 8.30pm

Tuesday

Men's Shed 9am-4pm
Dr Nyoni 10.15am-1pm
SA Ambulance Training 7.30pm-9.30pm
Library 10am-1pm

Wednesday

Community Bus (pension week) 9.30am

Thursday

Cards & Games (in recess) 11am-2pm
Transfer Station Open 10am-11am

Saturday

UC Op-Shop 9.30-11.30am
Transfer Station Open 10am-12pm

Sunday

Library 12pm-1.30pm
Courthouse Museum 11:30am-2:30pm
(2nd Sun each month)
Transfer Station Open 9am-10am

Catholic

Mass 9am

Uniting Church (UC)

Service 10.30am



THE PORT WAKEFIELD UNITING CHURCH AND
COMMUNITY MANAGEMENT COMMITTEE INC
INVITES YOU TO COME ALONG TO THE

PORT WAKEFIELD COMMUNITY CHRISTMAS EVENT

Hot
Donut

Sunday the 12th December

Raffles

Port Wakefield Town Oval

3.00pm until Late

Sausage &
Steak
Sandwich

Coffee

Carols from 7.00pm

Face
Painting

Jumping
Castles

CASH ONLY EVENT

Cold
Drinks

BYO Chair, Picnic rug and
Candles

Ice-Creams

Thought for the day

When we begin to take our failures non-seriously, it means we are ceasing to be afraid of them. It is of immense importance to learn to laugh at ourselves.
-Katherine Mansfield

--Please Note--

Next Issue: Wednesday November 24th, 2021

News Items to be submitted by email or to the Newsletter box in the Post Office by **Monday November 22nd, 2021**

Sports Results to be emailed by 9am **Tuesday November 23rd, 2021**

Info Phone: **Monica 0438 860 285**

COVID-19 VACCINATION

Port Wakefield Pop-Up COVID-19 Vaccination Clinic

Opening Hours

Every Thursday – 9.30am to 3.00pm
from 14 October until 18 November 2021

Soldiers Memorial Hall
41 Edward Street, Port Wakefield

Walk-ins welcome, bookings preferred.

Pfizer first and second dose appointments available for people aged 12 years and over.

Book now by scanning the QR code if you:

- Are 12 years and over
- Have not had another immunisation within 7 days
- Do not have a past medical history that puts you at risk of a vaccine*.

*If you are unsure, speak with your doctor.



Yorke and Northern Local Health Network COVID-19 Services - 8638 1125



Government of South Australia
SA Health

COVID VACCINE
.SA.GOV.AU

Community Bus

Dates for Community Bus to

Balaklava: November 10th

November 24th

Pickup at 9:30am, depart
Balaklava at 1:00pm

Munno Para: December 6th

Contact Helen on 0407 671 141 to book a seat



In the Garden 2021 No 21



There are so many new things to learn these days in this modern world, yet gardening is still the best way to enjoy our life, "pottering in the garden".

It's a place where old methods and modern work side by side. All we need is a plant, a pot with soil or a garden bed, and away we go. There is an old saying that to plant something to grow shows hope for tomorrow. I think so too.

Plantings for this month include Lettuce, Silver-beet, Zucchini, Capsicum, Beetroot, Carrot and Sweet-corn. In the flower areas, it is time to plant bulbs, Daffodils, Tulips, Dahlias, Pansies, Petunias, Ageratum, Marigolds and Calendula. Happy times to enjoy.

Cheers,
Wendy Garvie

Australia Day Celebrations & Port Wakefield Citizen of the Year & Young Achiever Award Presentation

Wednesday 26th January 2022

Port Wakefield SM Hall

**Brunch 10am
Followed by presentation**

Nomination forms coming soon

Uniting Church, Mine Street



Op Shop



Open every Saturday

9.30-11.30am

Are you looking for:

- Work clothes?
- Warm winter clothes?
- Jeans or trousers?
- Children's toys or clothes?
- Household goods?
- Jewellery and Bric a Brac?



We have lots of the above and more!

PORT CLINTON COMMUNITY
& SPORTS CLUB INC
12 YARAROO DRIVE, PORT CLINTON



Wine & Dine

Dinner Meals

Thursday, Friday & Saturday 4 till close
Excellent Menu available

All meals served with Salad bowl & Chips
Or Vegetables

Bookings Suggested

Bar Open Wednesday - Saturday 4pm to close
Bar Open Sunday 12 to 4pm

First Sunday of the month \$5.00 BBQ served at 1pm
Please book if attending BBQ with a large group

All Welcome – Memberships Available
Members enjoy discount on meals & drinks

Any enquiries / Bookings

Ph.: 88377103 (During Trading Hours)
Email anytime - pccc@internode.on.net

Don't let the Game Play you. Stay in control
Gamble Responsibly

**WE NEED
YOU!
WILL YOU
ANSWER
THE CALL?**

**VOLUNTEER NOW
BECOME A FIREFIGHTER**

For more information drop
into the Port Wakefield
CFS Station after 6PM on
Mondays

Port Wakefield CFS Cadets News

Our cadets have recently been learning how to use fire extinguishers. This Saturday, they will be meeting other cadets from the local area at a field day in Balaklava.

Come December, it's time for some end-of-year fun and a ten-pin bowling trip with other group cadets.



Port Wakefield Christmas

Run 2021

Sunday 12th December, From 11.00am

If you have any enquires or would like to volunteer or donate:
Please contact Aliesha or Kerry - pwcmc@portwakefield.sa.au

IS YOUR PROPERTY FIRE SEASON READY?

1 THE STANDARD for all properties in Wakefield:



Reduce all grass, pest plants and undergrowth within 20 metres of any building on any property to a maximum height of 10 cms.



2 PICK WHICH PROPERTY TYPE SUITS YOU ...

PROPERTY TYPE	THE STANDARD	CREATE A FIVE-METRE FIRE BREAK	
Under half a hectre OR	✓	→	Slash entire block. A fire break is not mandatory for this property size.
Over half a hectre OR	✓	✓	Requires a fire break around the entire property as close as practicable to the perimeter.
Primary production or industrial/commercial	✓	✓	If within 500 metres of any townships, buildings or structures, create a fire break along the perimeter and 100 metres on either side of the neighbouring assets.

A fire break is a five-metre wide strip where all grass, plants and undergrowth are less than 10 cm in height.



wrc.sa.gov.au



Price Scone Time

10am at Price S.M. Hall

10th of November

8th of December

Tea, coffee, and delicious scones

Gold coin donation



South Hummocks Model Aero Club,

South Hummocks Model Aero Club will be hosting a state-wide WW1 fly-in day on 14 Nov from 0900 hours. Bring the family to come and see some of the most amazing scale models of this era close up and in the air.

Located just 14 kms north of Port Wakefield. Head 4km up the YP Highway road and follow the newly-erected signs just at the chicken farms. Tea, coffee, and toilet facilities available.

Details Simon Koch 0466072493.



WORK WANTED

- Unskilled labour
- Gardening
- Housekeeping
- General duties
- Yard cleaning
- Heavy lifting
- Anything!

\$20 an hour or \$17.50 for pensioners.

Phone Tumai anytime
on 0499 782 884

Thank You

Thank you so much to:

- 1- Port Wakefield Bowling Club, who stood by me and my job for the last eight weeks.
- 2- Monica O'Leary, who covered my newsletter delivery.

I have been absent due to a family tragedy, and also my other half with health issues.
I can't thank you all enough. Much appreciated.

Regards to all,
Cheryl Duffield

Quiz questions

- 1- What is the Roman numeral for 500?
- 2- What is the world's most expensive spice by weight?
- 3- How many balls are on a pool table at the start of a game?
- 4- What is Kramer's first name on Seinfeld?
- 5- Kiwifruit originally came from which country?

Volunteer Wanted

The newsletter is in need of a new delivery person. Are you able to deliver 14 newsletters once a fortnight?

If so, please call Monica on 0438 860 285.



hAMCo
SERVICES

HOME AND GARDEN MAINTENANCE

0459 363 186

GARDEN & OUTDOOR SERVICES MAINTENANCE SERVICES

- | | | |
|-----------------------|------------------------|-----------------------|
| *Lawns & Edges | *Flyscreen Replacement | *Weeding & Pruning |
| *Tap Washers Replaced | *Rubbish Removal | *Door & Window Locks |
| *Window Cleaning | *Fence & Gate Repair | *Solar Panel Cleaning |
| *Gutter Cleaning | *On-site Welding | *Plus so much more |

FREE QUOTES

PENSIONER RATES APPLY

FAST, FRIENDLY, RELIABLE, LOCAL SERVICE



"Got one of these?"

Located at: 6 Phillips Street, Port Wakefield

Call Lee: 0475 103 833

**JOEL WILSON
PLUMBING & GAS
0458 103 833**

Your Local Plumber, Providing Quality Service

Birthdays



November

Flower- Chrysanthemum
Birthstone- Topaz

Nov 12- Clare Ann Elsworthy

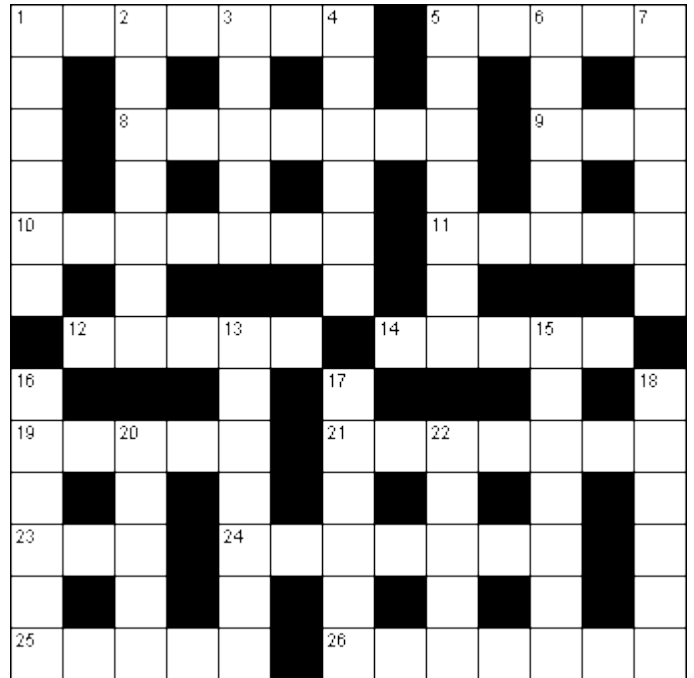
Nov 13- Barry Griffiths

Nov 17- Nick Gilgen
Harry Harding

Nov 20- David Robertson
Sheila Daniel

Nov 22- Beth Tugwell

Crossword 13



Across

1. Requested the presence of someone (7)
5. Prominent (5)
8. Closest (7)
9. Compete for something (3)
10. Expressed mirth (7)
11. Scope (5)
12. Started (5)
14. Mentally responsive (5)
19. Inexpensive (5)
21. Imaginary creature (7)
23. Pasture (3)
24. Bulwark (7)
25. Pay out (5)
26. Proposition deducible from basic postulates (7)

Down

1. Models of excellence (6)
2. Speculation (7)
3. Impart skills or knowledge (5)
4. Is afraid of (6)
5. Actual (7)
6. Corvine bird (5)
7. Cricket team (6)
13. Had a lofty goal (7)
15. Adult male chicken (7)
16. Weighing machine (6)
17. Pinnacle (6)
18. Apprise (6)
20. Efface (5)
22. Visual representation (5)

For Sale

One single bed Super Sleeper mattress topper, as advertised on television. Bought online, valued at \$350, and has not been used. Will sell for \$250 O.N.O. Machine washable.

Phone Wendy on 0400 732 783



Crossword 12 Solution

V	E	N	U	S		R	E	S	C	I	N	D
A			A		O		A		M			W
C	A	B	A	R	E	T		L	A	P	S	E
U		R		C		A		V				L
O	M	E	G	A		T	H	E	R	M	A	L
U		V		S		E				A		
S	T	I	G	M	A		R	A	N	C	I	D
		T				S		C		A		R
C	R	Y	P	T	I	C		C	O	B	R	A
H				E		H		O		R		S
A	L	B	U	M		O	P	U	L	E	N	T
N		A		P		O		N				I
T	U	R	M	O	I	L		T	O	N	I	C

Quiz answers

- 1- D
- 2- Saffron
- 3- 16
- 4- Cosmo
- 5- China

ADVERTISEMENT PRICES

Closing time Friday 3.30pm.

FULL PAGE	\$25.00
½ PAGE	\$12.50
¼ PAGE	\$ 7.50
2 or 3 lines	Free

**Business Services
Directory**

\$150/year

More Info: 0438 860 285

FRASER ELLIS MP
MEMBER FOR NARUNGA



37 Graves Street Kadina 5554
(08) 8832 2455
narungga@parliament.sa.gov.au
www.fraserellis.com.au

MID NORTH

Pest and Weed Control

**ALL PEST PROBLEMS
GENERAL & RURAL WEEDS**

- Termites
- Spiders
- Bees, Wasps
- Rats & Mice
- Flies, Fleas
- Millipedes
- Earwigs
- Salvation Jane
- Artichokes
- Calthrop
- Horehound
- Cape Tulip



Call Andrew Boylan 0429 802 912
Office 8842 2001

422 Main North Road, Clare
HEALTH COMM. LIC NO 12

VF2248903

T.A. REDDEN PAINTER

PO Box 20, Balaklava S.A. 5461

- * **NO JOB TOO BIG OR SMALL**
 - * **AVAILABLE ALL AREAS**
 - * **QUALITY WORKMANSHIP**
 - * **FREE QUOTES**
 - * **FULLY INSURED & LICENCED (BLD. 27142)**
- Terry:
Ph: 0407 077 992
taredden@internode.on.net

WH TREVERTON

PAINTER

WAYNE
0417 889 753

15 Railway Tce
Balaklava SA 5461
Home phone: 8862 1509



BLD Lic: 21955

Update your bedroom with one of our many Bedroom Suites!
Come in store and check out our full range of quality furniture at an affordable price.



BALAKLAVA STITCH JOINT

2-6 HOWE STREET, BALAKLAVA –
8862 1074

For all your Blinds / Awnings,
Flooring
and Furniture needs



Monday 9:30am – 1:00pm
Pharmacist Present 9:30am-1pm

Tuesday 9:30am – 4:30pm
Pharmacist Present 9.30 - 4:30pm

Wednesday 9:30 – 1:00pm
Pharmacist Present 9:30 –
1:00pm

Thursday Closed

Friday 9:30am – 4:30pm
Pharmacist Present 9:30 - 4:30pm

22A Burra St.

Port Wakefield

Phone/fax 88671566

Proprietor – A Rosser & Partners



**FOODLAND
BALAKLAVA**
13 WALLACE ST
BALAKLAVA SA 5461
PHONE 8862 1571
FAX 8862 2096
Online Shopping:
foodlandbalaklava.com.au



PORT WAKEFIELD MOTORS RECOVERY & TYRE SERVICE CENTRE

All Mechanical Repairs/Service,
Tyre Service, Towing,
24/7 Recovery & Road Service,
Beach Rescue

Pensioner Card Welcome
Call Ralph Todino

Ph: 8867 1311 or 0418 800 952
Highway One, Port Wakefield

www.ptwakefieldmotors.com.au

Stress Free Property Conveyancing

When buying or selling property – either by private contract or through an agent – ensure your peace of mind and be confident that your contractual rights are protected.

Call us for an obligation free quote.



GERMEIN REED
Lawyers & Conveyancers
2a Forster Street, Kadina
8821 1700
www.grmlawyers.com.au