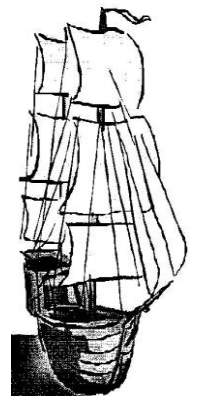




# Port Wakefield Community Newsletter

Wednesday February 28th, 2024  
Circulation 450

This is a Publication of the  
Port Wakefield Community Newsletter Inc.  
Email: [p.w.news@hotmail.com](mailto:p.w.news@hotmail.com)  
Published fortnightly



## COMMUNITY CALENDAR

### Monday

CFS Cadets (fortnightly) 5.00pm - 6.00pm  
CFS Training 6.00pm - 8.30pm

### Tuesday

Clementina Corner 10:00am-1:00pm  
Men's Shed 10:00am-1:00pm  
Dr Nyoni 10.15am-1pm  
SA Ambulance Training 7.30p 8m-9.30pm  
Library 10am-1pm

### Wednesday

Community Bus (pension week) 9.30am

### Thursday

Transfer Station Open 10am-11am

### Saturday

UC Op-Shop 9.30-11.30am  
Transfer Station Open 10am-12pm  
Library 10:30am-12pm

### Sunday

Library 12pm-1.30pm  
Courthouse Museum  
(2nd Sun each month) 11:30am-2:30pm  
Clementina Corner  
(2nd Sun each month) 11:30am-2:30pm

Transfer Station Open 9am-10am

### Catholic

Mass 9am

### Uniting Church (UC)

Service 10.00am

### Bin Days

Yellow Bin- March 7th  
Green Bin- February 29th

## Community Bus for Munno Para/Salisbury Shopping Trip



### Monday March 4<sup>th</sup>

Pickup 8:30am  
Home 3:30pm approx.

Contact Helen 0407 671 141 or  
Terry 0428 867107 to book your seat!

### Thought for the day

*Travel and freedom are perfect partners and  
offer an opportunity to grow in new directions  
--Donna Goldfein*

We acknowledge the Kurna people as the  
traditional custodians of the Adelaide Plains  
and pay our respects to Elders past, present,  
and emerging.

Our next issue is out on Wednesday March  
13th, 2024.

News Items to be submitted by email to  
[p.w.news@hotmail.com](mailto:p.w.news@hotmail.com) or to the Newsletter box in the  
Post Office by 9am on Tuesday March 12th.  
Info Phone: Jill 0448 709 800



## Port Wakefield Darts Association

### WE WANT YOU!

Calling all darts enthusiasts NOW is the time to get teams together for the 2024 season.

Register your interest TODAY!!!!

### Meeting to be held at the Rising Sun Hotel Wednesday 20<sup>th</sup> of March 7:00pm

A team captain or representative for your team should attend this meeting. During the meeting we will discuss, vote on and finalise:

- Team Names
- Players
- Home grounds
- Cost per team to play
- Raffles
- Amount of games required to play to qualify for finals

Things you need you know:

- Minimum of 4 players per team (with 1-2 reserve players would be ideal)
- Games start 7:30 pm each Wednesday beginning on April 3<sup>rd</sup>
- Travelling to Balaklava will be required

If you have a team of 3 or just a single player looking to join the competition please message the Facebook group or contacts below and we will see if we can put a team together for you.

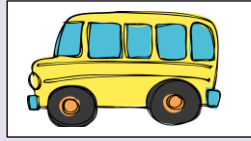
Teams to be registered with PWSDA by or at the meeting on Wednesday 20<sup>th</sup> of March

FB Messenger:	Port Wakefield Social Darts Association	
PWSDA President:	Cameron	0448 966 717
PWSDA V/President:	Vicki	0401 156 592
PWSDA Secretary:	Tyrone	0417 792 258
PWSDA Treasurer:	Ashley	0408 867 161

## **Community Bus**

Dates for Community Bus to

**Balaklava-**  
February 28<sup>th</sup>  
March 12<sup>th</sup>



Pickup at 9:30am,  
Depart Balaklava at 12:45pm

Contact Helen on 0407 671 141 to book your seat

### **FOR SALE**

#### **Large solid wardrobe**

\$100.00.

Lockable, in good condition, no drawers.

Call Mark Proudfoot 045 8867156

## **Avon Art & Craft Guild**

Meets each Tuesday 10.30 am to 2.30pm

Avon Craft Hall 1883 Avon Road, Avon

Learn a new Craft or bring your own, or  
just relax & enjoy the company of others in a quiet  
rural atmosphere.

Tea/Coffee Available BYO Lunch  
Materials/Equipment available.

Special Open Days throughout the year.

Info Jill 88671127 or Helen 0419819420

All Welcome

Exclusive Invitation to

***Saint Patrick's Day Celebration***

***Irish Shenanigans***

Tuesday March 19th



10.30am to 12noon at Avon Craft Hall  
1883 Avon Road. Avon

Includes Morning tea \$5.00

10.30 am till 1.30pm includes light Lunch \$12.00

Lots of Fun, Chocolate Wheel, Prizes

Bring a Joke, Wear Green & Smile

Bookings essential for catering

Numbers limited.

Phone Jill 88671127 or Helen 0419819420



**Patricia Halls**

3h · 🍷

I would just like to say thank you for today at the Rising Sun Hotel in Port Wakefield. We had a get together for the passing of our Mum. Victor, Pat, Donna and Tracy (who lives in New Zealand).



**FREE EVENT**  
March 15, 3.30pm-6.30pm



Wakefield Regional Council

**2024 Youth Week**

Snowtown Oval

Join us for a great free Youth Week event featuring a 70ft inflatable obstacle course, lawn games, BBQ, face painting and drinks.



**hAMCo**  
SERVICES

HOME AND GARDEN MAINTENANCE

**0459 363 186**

**GARDEN & OUTDOOR SERVICES MAINTENANCE SERVICES**

- \*Lawns & Edges
- \*Tap Washers Replaced
- \*Window Cleaning
- \*Gutter Cleaning
- \*Flyscreen Replacement
- \*Rubbish Removal
- \*Fence & Gate Repair
- \*On-site Welding
- \*Weeding & Pruning
- \*Door & Window Locks
- \*Solar Panel Cleaning
- \*Plus so much more

FREE QUOTES

PENSIONER RATES APPLY

FAST, FRIENDLY, RELIABLE, LOCAL SERVICE



**Yesterday's News**



*The Kapunda Herald* March 25<sup>th</sup> 1910

PORT WAKEFIELD--On Friday afternoon several men were trying to break into saddle a fine upstanding roadster colt. Mr Tiller, a professional coltbreaker, mounted him and the horse, after all sorts of capers, managed to throw him on the metal road, doing considerable bodily injury to the man. Tiller was taken to Dr Gribble for medical attention and is now on a fair way to recovery. On the same evening Mr Jacob Hill was leaving the town in a spring dray when his horses bolted and in turning around a corner was thrown violently against a stone wall. He received serious injuries to the head and upper part of the body. He was attended to by Dr Gribble and removed on Saturday to the Wallaroo Hospital. His case is causing his friends considerable uneasiness.

At Bruce's pictures on Wednesday night Mr Bruce was subject to considerable annoyance by a foreigner who promised him an inch or two of steel, at the same time showing him an ugly knife. No police being in the town, the special constable, Mr G. Strawhen, persuaded the man to go away. On Saturday evening a man supposed to have a revolver created some excitement by his threats, but no serious notice was taken of him.

[trove.nla.gov.au/newspaper/article/108422388](http://trove.nla.gov.au/newspaper/article/108422388)

**Quiz questions**

- 1-Mr Cauliflower was one of the early names considered for which famous TV character?
- 2-Cinder cone, shield and composite are different types of which natural phenomenon?
- 3-What type of rye bread is an old German slang word meaning "devil's fart"?
- 4-What is the smallest country in the world?
- 5-Which deadly disease was declared eradicated by the WHO in 1980?

**Sudoku 14**

	3	2						6
	4	9		3		1	2	
6								8
	2				3			
			9	6	1			
			5				6	
	7							3
	1	8		5		7	9	
2						8	1	

SudokuoftheDay.com

# Port Wakefield Bait Tackle & Camping



**Opening hours  
8am to 5pm  
everyday  
Including Public Holidays**

**After hours numbers  
88671311  
0457455429  
0481990993**

**Lures  
Hooks  
Sinkers  
Custom made Rigs  
Jigs and Jags  
Fishing Line  
Oils**

***Frozen Bait includes;*  
LIVE GENTS  
Goowla Cockles  
Squid pieces and  
more!  
Pilchards  
Tommies  
White Bait  
Carp chunks  
Whiting Head  
Prawns  
Blood & Tube  
Worms  
Mullet Mix  
And more....**

**ICE  
Fishing Rods  
All Crab equipment  
Crab Rakes  
Nets  
Soft Plastics  
and more...**

**Hats  
Beach toys  
Suncream  
Flashlights  
Fly nets  
Fuel Containers  
Butane**

**Highway one, Port Wakefield.  
Next to Port Wakefield Motors.**

# JOEL WILSON PLUMBING & GAS 0458 103 833



EFTPOS available

Opening hours: Tuesday, Wednesday & Thursday from 9am until 3pm, or by  
appointment.



Lic No. PGE269220

ABN: 84 627 968 729

# Birthdays

Birthstone- Bloodstone

Flower- Jonquil



March 3- Jacob Olsen

March 4- Casey Lane-Watson

March 5- Katene Underwood

March 10- Sienna Butson

March 11- Mark Moreton Jnr

# February

1	2	3	4	5	6	7	8	9	10	11	12	13
14				15					16			
17				18					19			
20				21					22			
			23				24	25		26		
27	28	29	30	31	32	33	34					
35			36	37		38				39	40	41
42					43				44			
45			46	47			48		49			
			50			51		52		53		
54	55	56	57		58		59		60			
61			62		63	64	65			66	67	68
69					70					71		
72					73					74		
75					76					77		

## ACROSS

- 1 Goes \_\_\_ (without a date)
- 5 Masculine
- 10 Chances of winning
- 14 Bee's home
- 15 Colder
- 16 Patronize
- 17 Similar
- 18 Gaze
- 19 Cleanse
- 20 Inject (3 wds.)
- 22 Arose
- 23 Perch
- 24 San Diego attraction
- 26 Music
- 27 Movie 2001's talking computer
- 30 Department (abbr.)
- 33 Curtsy
- 35 Id's counterparts
- 37 Persons who hold the highest elected office
- 42 Spice
- 43 Anger
- 44 Air (prefix)
- 45 Formulates instructions
- 49 U.S. Air Force
- 50 Possessive pronoun
- 51 Haze
- 53 Resort hotel
- 54 Boat
- 57 Wager
- 59 Change color
- 61 Sweet confection
- 63 Made ideal
- 69 Belief
- 70 Display affection in an enticing manner
- 71 Juno
- 72 Lite
- 73 Spooky
- 74 Take the wrinkles out
- 75 Only
- 76 Painter Richard
- 77 Mislaid

## DOWN

- 1 Thick carpet
- 2 Carved Polynesian pendant
- 3 Tel \_\_\_ (Israel's capital)
- 4 Chromosome components
- 5 Faux pas
- 6 Adrenocorticotrophic hormone
- 7 Goodbye !
- 8 Computer rate
- 9 Unrefined metal
- 10 Capital of Norway
- 11 Capital of Bangladesh
- 12 State capital
- 13 Worn out
- 21 Rescue
- 22 Cedar
- 25 Kimono sash
- 27 Rope fiber
- 28 Seaweed substance
- 29 South of the border crazy
- 31 Reserved
- 32 What is agreed upon
- 34 Suitor or sweetheart
- 36 Segoe lily's bulb
- 38 Appear
- 39 Loch \_\_\_ monster
- 40 Entrap
- 41 Couch
- 46 Jewel
- 47 Is
- 48 Twirls
- 52 Girl
- 54 Hydrochloric and nitric, for example
- 55 Tuner
- 56 Prayer position
- 58 Floor coverings
- 60 Zero
- 62 Social event with a person whom one has an interest
- 64 Gravel
- 65 Canal
- 66 Cipher
- 67 February zodiac sign and god of love
- 68 Citizen of Denmark
- 70 Fixed charge



Monday 9:30am – 1:00pm

Tuesday 9:30am – 4:30pm

Wednesday 9:30 – 1:00pm

Thursday Closed

Friday 9:30am – 4:30pm

22A Burra St.

Port Wakefield

Phone 88671566

Fax 7070 0015

Proprietor – Cindy Nguyen

## Chinese New Year Solution

D	I	V	A		B	A	S	E	D		S	C	O	T
A	R	E	S		A	R	Y	A	N		P	O	S	E
L	A	S	S		Y	E	N	T	A		E	L	A	N
N	T	E	R		L	A	C	E			A	W	O	K
Z	A	G			P	A	L	S			L	I	P	
E	G	O	S		F	A	N	C	Y	F	E	A	S	T
B	O	L	E		M	A	R				E	C	H	O
U	N	D	E		R	I	O				L	I	O	N
A	H	A			C	O					I	O		
M	A	N	G		E						A	B	A	T
U	N	D	O		G	N	A	S	H		B	R	I	E
C	O	E	D		A	G	R	E	E		R	I	C	A
K	I	S	S		S	O	N	A	R		A	C	E	S

## Sudoku 13 Solution

7	5	3	1	9	6	2	8	4
9	1	4	3	2	8	6	5	7
8	2	6	4	5	7	1	3	9
5	6	7	8	3	4	9	1	2
3	4	9	2	1	5	7	6	8
2	8	1	7	6	9	3	4	5
6	3	8	5	7	2	4	9	1
1	7	5	9	4	3	8	2	6
4	9	2	6	8	1	5	7	3

## Quiz Answers

- 1-Mr Bean 2-Volcanoes
- 3-Pumpnickel 4-Vatican City
- 5-Smallpox

# MID NORTH

## Pest and Weed Control

### ALL PEST PROBLEMS GENERAL & RURAL WEEDS

- Termites
- Spiders
- Bees, Wasps
- Rats & Mice
- Flies, Fleas
- Millipedes
- Earwigs
- Salvation Jane
- Artichokes
- Calthrop
- Horehound
- Cape Tulip



Call Andrew Boylan 8400 800 810  
Office 8842 2001  
422 Main North Road, Clare  
HEALTH COMM. LIC NO 12

VF2248963



## PODIATRIST

15 EDITH TERRACE  
BALAKLAVA SA 5461

### Opening Hours:

Monday 9-3  
Tuesday 9-3  
Wednesday 9-3  
Saturday 10-1

Phone: 88290967

Email: libby@carepluspodiatry.com.au

## T.A. REDDEN PAINTER

PO Box 20, Balaklava S.A. 5461

- \* **NO JOB TOO BIG OR SMALL**
- \* **AVAILABLE ALL AREAS**
- \* **QUALITY WORKMANSHIP**
- \* **FREE QUOTES**
- \* **FULLY INSURED & LICENCED (BLD. 27142)**

Terry:

**Ph: 0407 077 992**  
**taredden@internode.on.net**



### PORT WAKEFIELD MOTORS RECOVERY & TYRE SERVICE CENTRE

All Mechanical Repairs/Service,  
Tyre Service, Towing,  
24/7 Recovery & Road Service,  
Beach Rescue  
*Pensioner Card Welcome*  
Call Ralph Todino

**Ph: 8867 1311 or 0418 800 952**  
Highway One, Port Wakefield

[www.ptwakefieldmotors.com.au](http://www.ptwakefieldmotors.com.au)

## Stitch's Spring Special!!!

Buy any mattress this Spring and  
receive a twin pack of Pillows!!!  
\*\* Easy Care Firm Pillows \*\*  
In Store Now and  
only while stocks last!!!



### BALAKLAVA STITCH JOINT

2-6 HOWE STREET, BALAKLAVA –  
8862 1074  
Flooring, Blinds, Awnings, Furniture &  
Manchester



FOODLAND  
BALAKLAVA  
13 WALLACE ST  
BALAKLAVA SA 5461  
PHONE 8862 1571  
FAX 8862 2096

Online Shopping:  
[foodlandbalaklava.com.au](http://foodlandbalaklava.com.au)

## FRASER ELLIS MP MEMBER FOR NARUNGA



37 Graves Street Kadina 5554  
(08) 8832 2455  
[narungga@parliament.sa.gov.au](mailto:narungga@parliament.sa.gov.au)  
[www.fraserellis.com.au](http://www.fraserellis.com.au)

## Stress Free Property Conveyancing

When buying or selling property –  
either by private contract or through  
an agent – ensure your peace of  
mind and be confident that your  
contractual rights are protected.

Call us for an obligation free quote.



GERMEIN REED  
Lawyers & Conveyancers  
2A Forster Street Kadina  
PO Box 12 Kadina SA 5554  
8821 1700  
[www.grmlawyers.com.au](http://www.grmlawyers.com.au)

## WH TREVERTON PAINTER

WAYNE  
0417 889 753

15 Railway Tce  
Balaklava SA 5461  
Home phone: 8862 1509



BLD Lic: 219551